



# MISKAWAAN

HEALTH GROUP

**Introduction to MHG**  
November 2024

# VISIONARY HEALTHCARE

AT MHG, WE CONSIDER EACH CLIENT TO BE A WHOLE INDIVIDUAL & NOT JUST A COLLECTION OF BODY PARTS

CONVENTIONAL MEDICINE TYPICALLY INVOLVES TREATING ONE SYMPTOM AT ONE TIME WITH ONE OR MORE CHEMICAL DRUGS. THIS QUITE OFTEN SUCCESSFULLY MITIGATES THE IMPACT OF THE SYMPTOM BUT DOES NOT RECTIFY THE UNDERLYING MEDICAL CONDITION. FURTHER, THE CONSUMPTION OF CHEMICAL DRUGS REGULARLY LEADS TO SIDE-EFFECTS

MHG'S VISION IS AN INTEGRATED CARE APPROACH THAT PUTS THE PATIENT AT THE CENTER OF CARE, TREATING THE INDIVIDUAL RATHER THAN JUST THE DISEASE



## BRAND PURPOSE

"WE ADD LIFE TO YOUR YEARS,  
NOT JUST YEARS TO YOUR LIFE"

"WE ENHANCE THE QUALITY OF YOUR LIFE,  
NOT JUST THE LENGTH OF IT."

---

## BRAND PROMISE

"YOUR BODY IS YOUR BEST DOCTOR"

"WE EMPOWER YOUR BODY TO HEAL ITSELF."



MISKAWAAN  
HEALTH GROUP





**Founded in 2018 by David P Boehm and Dr. Johannes Wessolly, Miskawaan is a game-changing healthcare group that is transforming the landscape of medicine.**

David, an Australian entrepreneur, had a profound awakening after personal encounters with antibiotics and debilitating stomach issues, leading him to question the effectiveness of conventional medicine.

Enter Dr. Johannes Wessolly, an esteemed pioneer in the field of functional healthcare. With over two decades of experience treating patients in his own clinic in Germany, Dr Wessolly possesses unparalleled expertise and an unwavering commitment to improving patient outcomes.

It was during his own transformative journey as a patient that David experienced Dr. Wessolly's exceptional talent firsthand. The doctor's intuitive and inquisitive approach to diagnosis and treatment left David astounded and deeply inspired. This remarkable bond of friendship quickly blossomed into a shared vision of revolutionizing healthcare.

Recognizing the untapped potential in the Asian market, David extended a visionary invitation to Dr. Wessolly to become a co-founder of MHG. Miskawaan was born—an ambitious venture fueled by the fusion of Dr. Wessolly's vast medical knowledge and David's business acumen.



# Friends that wanted to change healthcare

LEFT:  
DAVID P BOEHM  
ENTREPRENEUR, CO-FOUNDER

RIGHT:  
DR JOHANNES WESSOLLY  
DOCTOR, CO-FOUNDER

PROPRIETARY & CONFIDENTIAL © 2024 Miskawaan Health Group. All rights reserved.





# anti ageing



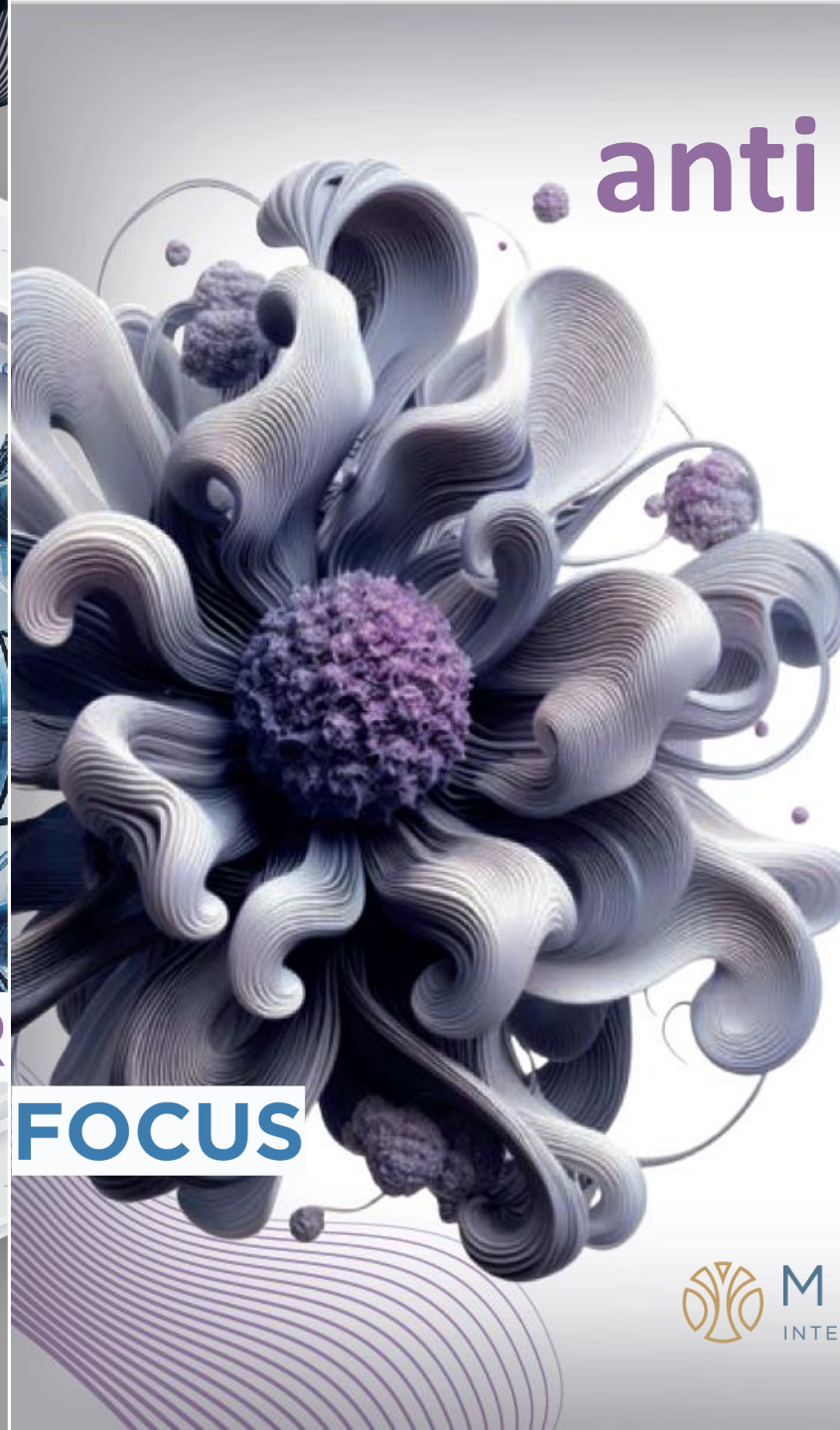
OUR

FOCUS



MISKAWAAN  
HEALTH GROUP

# anti cancer



MISKAWAAN  
INTERNATIONAL HOSPITAL



## Anti ageing (also known as Healthy ageing)

- 620 million people in Asia Pacific will be aged over 60 by 2025 and the anti ageing/longevity economy in Asia Pacific is projected at US\$4.56 trillion by 2025 (1).
- The market growth is attributable to the increasing prevalence of chronic diseases and growing investments from government and private organizations to detect and prevent diseases at early stages.
- Miskawaan primarily operates its anti ageing business in partnership with hospitality owners; its current clinics are located at the Sukhothai Hotel, Bangkok and at Miskawaan Villas Resort in Koh Samui.



## Anti cancer

- Most countries in Asia are facing a growing burden of non-communicable diseases such as cancer, diabetes, hypertension, and cardiovascular diseases.
- Nearly two-thirds of deaths in the South-East Asian region are attributed to cardiovascular diseases, cancer, diabetes, and other diseases (3) and cancer is expected to grow at the fastest growth rate until 2030 (2).
- The increasing prevalence rate of cancer in Asia and the growing adoption of cancer detection tests such as biomarkers tests are major factors driving the segment growth (2).
- Miskawaan primarily operates its anti cancer business via its flagship Miskawaan International Hospital (under construction but partly operating).



# Flagship Bangkok Hospital with Anti Ageing Clinics Strategically Located in Hospitality Properties

## Potential Future Projects



**MISKAWAAN  
INT'L HOSPITAL**

Fully Licensed Medical Hospital in Bangkok, Specialising in Cancer (Phase 1 Opened in February 2024, Phase 2 Opening in early 2025)



**SAMUI RESORT  
ANTI AGEING CLINIC**

Thailand's Only Fully Medically Licensed Beachfront Villa Clinic (Since 2021)



**SUKHOTHAI HOTEL  
ANTI AGEING CLINIC**

Bangkok's First Independent Anti ageing Clinic based in a 5-Star Hotel (Soft launch in August 2024)



**CHIANG RAI  
CLINIC**

Fully Licensed Medical Clinic/Laboratory/R&D at Mae Fah Luang University



**PHUKET  
ANTI AGEING CLINIC**

Ultra Luxury Villa Clinic Targeting HNW clients



**MULTI-HOTEL  
ANTI AGEING CLINICS**

First Miskawaan co-branded Anti ageing clinic partnership outside Thailand ?

# Why Choose Miskawaan?

- **Personalized Health Optimization:** Our anti ageing clinics stand at the forefront of health optimization, merging the latest scientific research with holistic health principles to tailor health treatment plans.
- **Experienced and Compassionate Team:** Our team, comprising world-class medical professionals and wellness practitioners, is deeply committed to patients' health and well-being.
- **Innovative and High Quality Treatments:** We pride ourselves on our innovative approach to healthy ageing and our access to cutting-edge, high quality technologies and treatments. From advanced diagnostics to personalized regenerative therapies, our techniques and medicines are selected for the best healthcare in the world.
- **Integrative Medical Approach:** The Miskawaan Way is holistic at its core, integrating conventional and functional, physical and mental health practices to create a balanced approach to healthcare that addresses the whole person, not just symptoms.





# Miskawaan's Suite of Innovative Novel Products

## *Being brought exclusively to Thailand*



### ANTI AGEING

- Next generation genome sequencing epigenetic testing panels
- Stem cell and NK cell rejuvenation
- Secretome therapy (next generation stem cells)
- >20 Proprietary infusions (incl. Chlorogenic Acid)
- Weight management programme
- Gut health / Anti inflammation diagnostics
- Mindshift mental health protocol
- EBV and Klotho protein protocols

### ANTI CANCER AND CHRONIC CONDITIONS

INTEGRATING CONVENTIONAL AND FUNCTIONAL MEDICINE

- Personalised, precision treatments
- Benfo-Oxythiamine for cancer and viral infections
- Cutting edge Chlorogenic Acid treatments
- Secretome to heal chronic wounds
- Latest liquid biopsy diagnostics
- Post-chemo blood washing

- **Chlorogenic Acid (CHA):** exclusive partnership with Jiuzhang Biotech (JZB) for natural CHA anti-ageing and anti-cancer products and treatments.
- **Secretome Therapy:** partnerships with biotech for anti-ageing therapy and chronic wound management. Cutting-edge treatments using secreted stem cell bio-factors as a faster and safer alternative to stem cell treatments.
- **Benfo-oxythiamine (B-OT):** partnership with German company Benfovir AG for highly effective, first-in-class anti-cancer and anti-viral drug with little or no toxic systemic side effects.
- **Proprietary Infusions:** our infusions are formulated by Dr Wessolly to target a wide range of conditions, enhancing the body's natural healing capabilities and promoting overall well-being. They act as powerful antioxidants, lowering inflammation, and restoring the body's immune system.
- **EDIM Cancer Testing:** a breakthrough in cancer prevention and early detection. A simple blood test that offers a new level of precision in detecting various tumors, including those elusive to traditional testing methods.
- **Cell Regeneration Therapy:** using stem cells derived from cord tissue and amniotic membrane to harness the body's intrinsic repair mechanisms, promoting healing and regeneration without the need for tissue matching.

# Sept'24: Miskawaan's Groundbreaking and Exclusive Partnership with Jiuzhang Biotech to Introduce Cutting Edge CHA Products to Thailand

## Summary of the partnership

- On 7<sup>th</sup> September 2024, Miskawaan Health Group (MHG) and Jiuzhang Biotech (JZB) entered into an exclusive partnership Agreement that enables MHG to be the first healthcare provider to import, distribute and utilise JZB's Chlorogenic Acid (CHA) products outside China.
- MHG initially plans to apply the CHA products throughout its network in Thailand including Miskawaan International Hospital (under construction in Bangkok) and at its Anti-Ageing clinics at the Sukhothai Hotel in Bangkok and in Koh Samui.
- MHG's partnership with JZB demonstrates MHG's access to innovative natural & medical health products and the strength of its platform in Thailand – JZB is the first of many expected partnerships with next generation health product companies that seek to access the Thailand market.
- The partnership is expected to contribute to top-line and EBITDA growth of MHG from Q4 2024 with conservative estimated annual EBITDA contribution of US\$5m from 2025 onwards. The target customers include both local patients in Thailand and international patients from Asia, in particular from China.

## Who are Jiuzhang Biotech?

- JZB is a Chengdu, China-based biotechnology company developing cutting edge cancer and anti-ageing treatments based on CHA (extracted and purified via a proprietary method from a well-known Traditional Chinese Medicine plant).
- JZB's products include health products, health foods and skincare products.
- JZB was founded by Chairman Zhang Jie and its products have been researched and developed in partnership with esteemed Professor Wenbin Li, MD, PhD, one of China's leading neurosurgeons based in Beijing.



*Zhang Jie, Chairman  
and CEO of JZB*



*Prof Wenbin Li  
MD PhD*



# What is Chlorogenic Acid; what is the breakthrough with JZB's product? And how can MHG's patients benefit from this new technology?

## What is Chlorogenic Acid?

- Chlorogenic Acid (CHA) is mainly found in plants belonging to Ionicera genus but it is also commonly found in many fruits and vegetables such as sweet potatoes, tomatoes, coffee beans and bananas, but at a very low level.
- CHA has well-known properties that support the human body's immune system with preventative, anti-ageing applications.
- JZB's breakthrough, after many years of R&D, was to develop a proprietary process for extracting high-purity CHA (99.9%) and produce an intramuscular injection (a pharmaceutical-grade product).
- In addition to anti-ageing uses, CHA has wide-ranging applications to fight chronic illnesses such as cancer by helping the human body's immune system to effectively treat cancer cells with minimal side effects.
- JZB's patented CHA, administered via intramuscular injection, has successfully completed Stage 1 & Stage 2 clinical trials in China for the treatment of brain cancer, yielding highly positive results.
- JZB's scientists have also successfully treated patients suffering from hard-form cancer tumors including breast, lung, kidney, prostate and liver cancers.

## How is CHA taken by patients?

- For anti-ageing therapies, CHA can be taken in the form of tablets, gummies and/or powders; as a cream (for skincare); and as an IV infusion or intramuscular injection (for the most effective absorption by the body).
- MHG is well-known in Thailand for its high-quality and proprietary IV treatments pioneered by its founding Medical Director, Doctor Johannes Wessolly.
- For cancer treatment, a thorough doctor-patient consultation and advanced diagnostics leads to a treatment recommendation by MHG's team of experienced medical staff and oncologists (which may include other therapies as well); a typical treatment plan lasts for 3 - 6 months as a series of regular infusions separated by intervals of testing and progress measurement, combined with a personalised dietary and lifestyle plan.

## How can I find out more information?

- **For more information about CHA and its potential applications please contact Joanne Boehm at [joanne.b@miskwaanhealth.com](mailto:joanne.b@miskwaanhealth.com)**

# Secretome – the next generation of stem cells

## What is Secretome and how is it taken?

- Secretome is a proprietary set of biologically active ingredients that harness the power of stem cells without using the stem cells themselves in the final product. The ingredients are secreted from stem cells during the growth process.
- The product is cell-free reducing ethical, regulatory and safety issues as compared to using stem cells directly. It also acts faster, costs less and can be used in lower dosages.
- Secretomes are a class of cell-free medicinal products harvested from living cells grown under pharmaceutical grade conditions.
- They contain biologically active ingredients capable of exerting physiological changes within the body through the 'paracrine effect'. Paracrine refers to signaling between cells and is well established as the main mode of action for the localised regenerative capability of stem cells.
- Through paracrine effects, the Secretome derived from stem cells has the capability to not only boost energy levels and reduce pain and inflammation temporarily but can create longer term improvements by regenerating, adjusting and resetting pathways in your body at a cellular level.
- Secretome is a powerful wound healing agent, comprehensively shown in multiple biological systems to dramatically increase the speed of healing for acute wounds and in many cases completely resolve untreatable chronic wounds.
- Secretome can be administered by medical professionals via IV infusion or topical application on wounds and damaged skin areas.

## What are the benefits of Secretome?

- **All the benefits of stem cells without the need to use the cells themselves**
- **Tissue Repair and Regeneration:** Promotes the healing and regeneration of damaged tissues, including muscles, skin, and organs, by stimulating local cells and activating repair pathways.
- **Anti-inflammatory Effects:** Modulates the immune system by reducing chronic inflammation, which is a key factor in aging and age-related diseases.
- **Angiogenesis:** Enhances the formation of new blood vessels (angiogenesis), improving circulation and nutrient delivery to tissues, which supports tissue health and repair.
- **Cellular Senescence Reduction:** Reduces cellular senescence, the process where cells stop dividing and contribute to aging and tissue dysfunction, by promoting autophagy and improving cell vitality.
- **Antioxidant Activity:** Provides antioxidant protection, reducing oxidative stress and the associated cellular damage that accelerates aging
- **Neuroprotection and Cognitive Support:** Protects neurons and supports cognitive function by enhancing neuroplasticity, reducing inflammation in the brain, and promoting the survival of neural cells.
- **No product transport or storage concerns:** stem cells require frozen shipping and are very sensitive during handling and administration.



# What is Benfo-oxythiamine; what is the breakthrough? And how can patients benefit from this new technology?

## What is Benfo-oxythiamine?

- Benfo-oxythiamine (B-OT) is a modified, synthetic version of vitamin B1 that acts as an inhibitor of two critical cellular pathways which are exploited by all growing cancer cells and viruses replicating in the body.
- Benfovir's breakthrough, after many years of R&D, was to develop the novel and proprietary form of vitamin B1 which is 250 times more effective than oxythiamine alone due to increased stability and bioavailability.
- **B-OT is a first-in-class drug.** Uniquely, it acts by blocking the formation of the basic biological building blocks that cancer cells and viruses require to replicate as well as modulating immune responses, all without impacting on the function of existing cells in the body.
- Benfovir's patented B-OT, administered by injection or topical application, has been proven highly efficacious in relevant biological systems and well as completing Phase I clinical trials in Germany.
- In partnership with Miskawaan, next phase clinical studies for Dengue virus infection are being planned in Thailand.

## How is B-OT taken by patients?

- For anti-cancer therapies and blood borne viral infections, B-OT can be taken by injection.
- For skin based viral infections, B-OT can be administered topically via a dermatologically formulated medical gel.
- MHG is well-known in Thailand for its high-quality and proprietary treatments pioneered or endorsed by its founding Medical Director, Doctor Johannes Wessolly.
- For treatments, a thorough doctor-patient consultation and advanced diagnostics leads to a treatment recommendation by MHG's team of experienced medical staff and oncologists (which may include other therapies as well). Treatment plans vary in length and dosage depending on the condition and its severity.

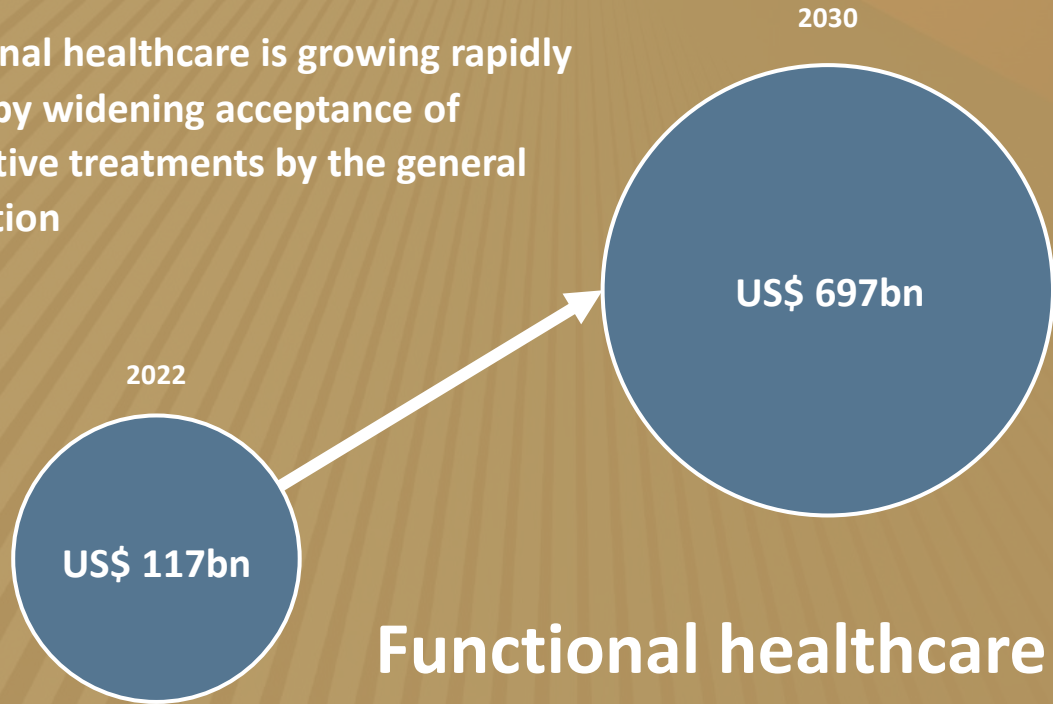
## How can I find out more information?

- **For more information about B-OT and its potential applications please contact Joanne Boehm at [joanne.b@miskwaanhealth.com](mailto:joanne.b@miskwaanhealth.com)**



# MHG stands out by combining conventional healthcare with functional medicine

Functional healthcare is growing rapidly driven by widening acceptance of alternative treatments by the general population



**Functional healthcare +  
conventional medicine =  
Integrative approach**

GROWTH IN GLOBAL COMPLEMENTARY AND ALTERNATIVE  
MEDICINE MARKET (GRAND VIEW RESEARCH, 2023)

Functional medicine is at the heart of our mission, embodying the practice of leveraging the inherent evolutionary functions of the body for maximum effect

We employ high quality, natural plant-based therapies and bio-identical substances to strengthen the human immune system, emphasizing prevention and personalized treatment

At Miskawaan, functional medicine is applied with precision, addressing the root cause of diseases through comprehensive diagnostic testing and a focus on the body's healing mechanisms

Our commitment to less invasive, natural treatments fosters better long-term patient outcomes, marking a transformative shift in healthcare standards



# The Miskawaan Way



**MISKAWAAN**  
HEALTH GROUP

	PURELY CONVENTIONAL HOSPITALS/CLINICS	THE MHG INTEGRATIVE APPROACH
DIAGNOSIS METHODOLOGY	 <b>5-15 mins</b> Doctor Consultation   Lack of Focus on Root Causes (Symptoms Focused)   Examine a health problem from a specialised perspective	 <b>60+ mins</b> Doctor Consultation   Strong Focus on Root Causes   Examine health problem from an integrative perspective
TREATMENT METHODOLOGY	 Use of chemical drugs   Generic Solution	 Use of natural substances (supplements & infusions)   Personalized solution based on clients' lab results
CLIENTS' OUTCOMES ARE PRONE TO	 Rely on chemical drugs   Side effects from long term chemical drugs   Aging with compromised quality of life	 Reduce or eliminate clients' use of chemical drugs   Free from chemical drug side effects   Aging with maximum, if not optimal quality of life

# The MHG Integrative Approach

## PERSONAL & PRECISION DIAGNOSTICS

Precision diagnostics that inform you of choices just for you

## PRIMARY TREATMENTS

Preventative, Chronic and Cancer Primary treatments combining best of Western, TTM, TCM

## ROOT-CAUSE DIAGNOSIS

IFM doctors look for root causes based on diagnostics, not the symptom

## IMMUNE SYSTEM BALANCE

Immune system, Gut Brain Axis establishes healthy balance and restores effective defense against chronic illness

## DETOXIFICATION

Toxins need to be purged for balance to be restored in the body

## LIFESTYLE MODIFICATION

Long-term improvement requires change to nutrition, exercise and sleep





# Products & Services Focused on Anti Ageing / Anti Cancer



**Immune Support  
Program**



**Natural Customized  
IV Therapy**



**Prevention  
& Treatment of Cancer**



**Preventive Cardiovascular  
Health Program**



**Improving Gut Health,  
Gut Microbiome**



**Genetics testing  
& Cell Therapies**



**Preventive Nutrition  
& Weight Management**



**Lifestyle and  
Wellness Program**



**Metabolic  
Syndrome Treatment**



**Detoxification  
Program**



**Physiotherapy  
& Rehabilitation**



**Hormone  
Balancing Therapy**



# Anti Ageing Case study 1: Miskawaan-Sukhothai Hotel Partnership

## Clinic Highlights

Located in the main hotel building, the clinic is a fully-licensed medical clinic with four treatment rooms and four infusion pods (Miskawaan is responsible for applying for and maintaining the clinic licence)

## Business model

Sukhothai covers initial investment; MHG pays rent to Sukhothai and supplies medical staff and medical supplies; joint marketing and co-branding

## Services

Longevity-related Diagnostics, Regenerative Medicine, Infusions, Aesthetics and Traditional Chinese Medicine; some services can be provided in-room vs in-clinic

## Expected no. of patients

>300 patients in Year 1; profitable in the first year.  
Revenue increasing to >US\$1m within 2 years

- Soft launch in **August 2024**
- 2024: 1 Doctor and 4 nurses; 2025: 1 additional doctor





## ANTI AGEING CASE STUDY 2:

# Thailand's only fully medically licensed beachfront villa clinic

## SAMUI CLINIC LOCATED AT VILLA

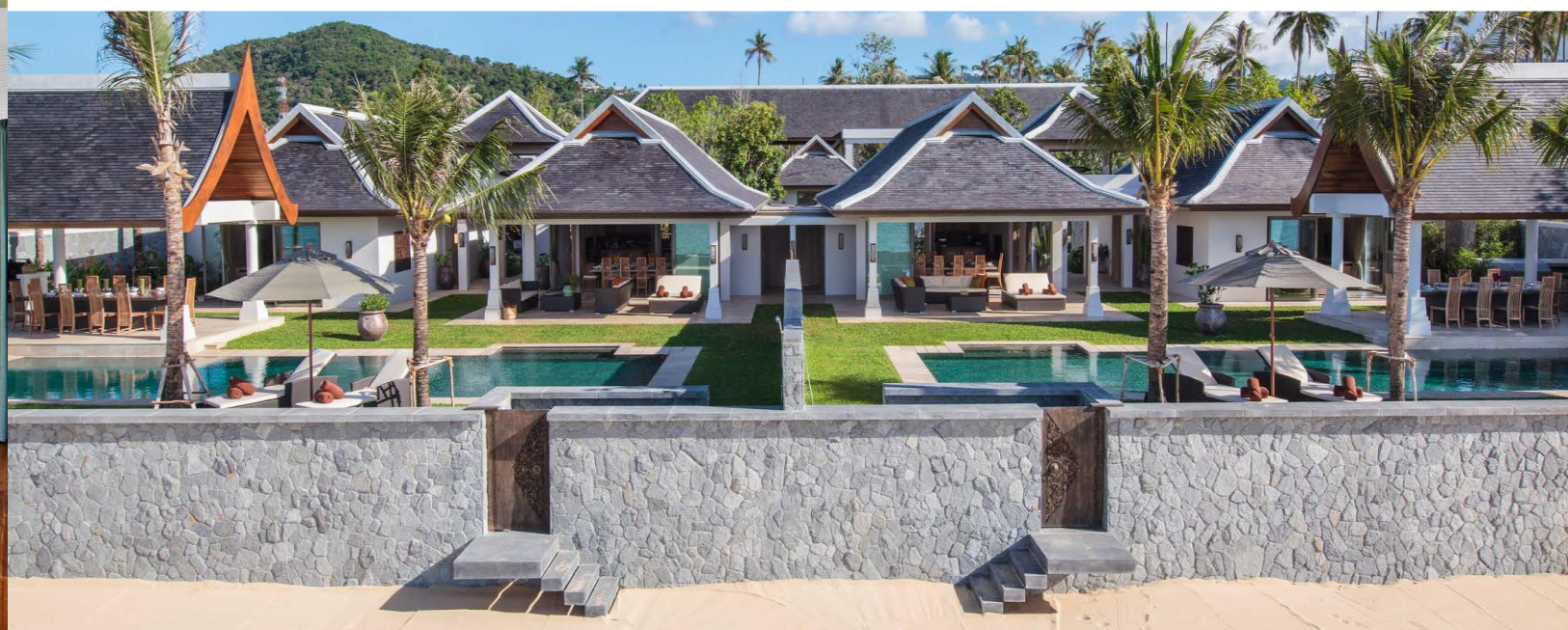


Miskawaan Villas is MHG's affiliate with 10 luxury multi-bedroom villas in a prime beachfront location in Samui

Samui Clinic was opened in 2021 to focus on anti-ageing treatments; treatments are also offered in-room

Three highly experienced doctors based in Samui including a German doctor and two Thai doctors

Retreat packages in conjunction with premium villas for recovery and rehabilitation



## WHY THAILAND?

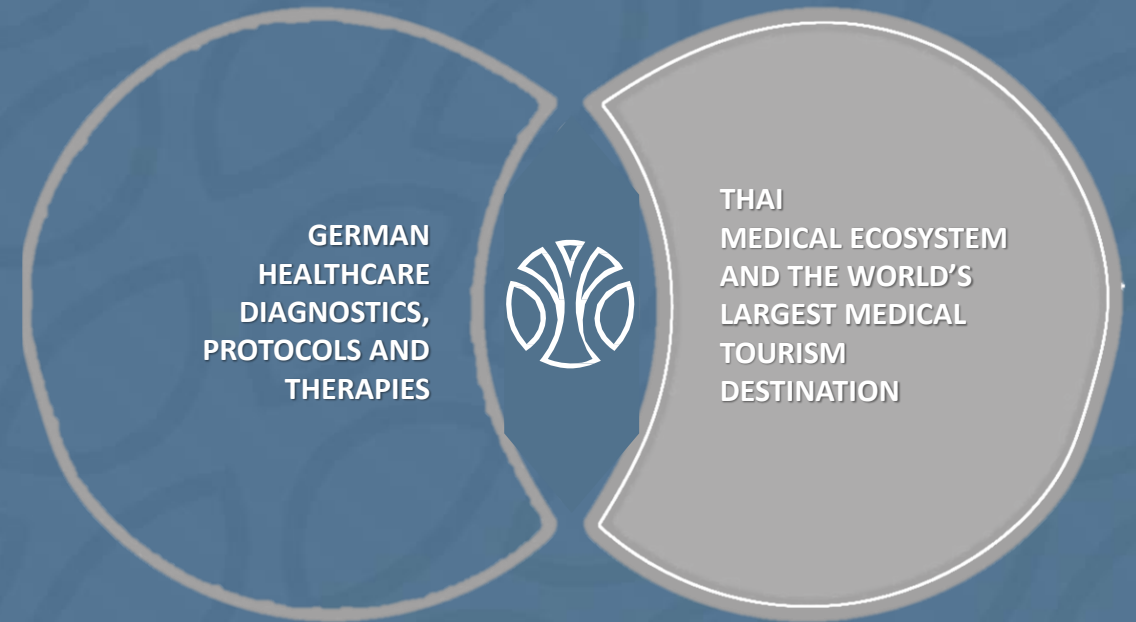
## WHY GERMANY?

Thailand dominates the global medical tourism industry, capturing 22% of the market share and welcoming 1.8 million visitors in 2022<sup>(1)</sup>

German medical protocols are esteemed for their rigorous standards, research focus, and stringent regulations. High-quality medical education and collaboration between academia and industry contribute Germany's unrivalled global healthcare rankings.



MISKAWAAN  
HEALTH GROUP



THE FUTURE OF HEALTHCARE FOR HUMANITY



## MANAGEMENT TEAM

# Experienced and dedicated management team



**David P Boehm**

Co-Founder  
and CEO



**Dr Johannes Wessolly**

Co-Founder and  
Chief Medical Director



**Frank Veyder**

Chief Operations Officer

**Polina Kurna**

Head of Business  
Development

**Dr Dev**

Hospital Director (Designate)

**Ralf Krewer**

Senior Consultant  
(Sales)

**Khun Chantana**

Head of HR

**Khun Thiti**

Finance Director

**John Dangerfield**

Chief Scientist

# MEET OUR MEDICAL ADVISORY BOARD

As part of our mission to bring you visionary healthcare and lifelong wellbeing, we have sought the best medical minds with a passion for honest and effective healthcare to join our medical team. Our highly respected and experienced medical advisory board direct and advise our global medical team on the latest medical innovations, research and treatment options.



**JOHANNES WESSOLLY, MD.**  
MHG's Global Chief Medical Advisor

With over 30 years of experience, Dr. Wessolly is an expert in combining naturopathic therapy with cutting-edge diagnostics to create highly effective prevention & treatment plans, he is also an experienced anaesthetist. Dr. Wessolly is also a highly sought-after speaker at specialist congresses & seminars, and regularly conducts training programs for fellow doctors in Germany & abroad. He is a member of the German Society for Anti-Aging Medicine (GSAAM), Naturopathy in Medicine (NTDM).



**ROSS WALKER, MD.**  
MHG's Medical Advisory Board Member

One of Australia's most eminent cardiologists, Dr. Walker has a medical practice in Sydney practicing echocardiography, focusing on stress echocardiography: a well-accepted, accurate method for assessing heart disease, without use of irradiation or injections. He is also specialised in the field of preventative cardiology and has published 7 bestselling books on preventative cardiology, both nationally and internationally.



**URSULA JACOB, MD.**  
MHG's Medical Advisory Board Member

A General Medicine Specialist and clinic owner, has over 20 years of experience in Rejuvenation Medicine. She founded the Day Clinic for Prevention and Regeneration in Germany, focusing on cell therapy and homeopathy for rejuvenation. Dr. Jacob is an active researcher in stem cells, achieving notable success in treating degenerative diseases and enhancing life quality across different age groups.



**PROF. DR. TILMAN FRITSCH**  
MHG's Medical Advisory Board Member

A pioneering German functional dentist, leads transformative Functional dentistry. With four clinics across Germany, Austria, and Switzerland, he spearheads NAM-Philosophy and NAM-Dentistry. His groundbreaking work includes the first metal-free hybrid implant and holistic patient care products. Notably, he heads the NAM-University Institute, shaping the future of dental education and practice in Salzburg, Austria.





## A brilliant team of local Doctors and Medical Staff



# Patient Acquisition Channels

## Agents

Corporates or individuals who market MHG's services in international markets and refer patients



**MISKAWAAN**  
HEALTH GROUP

## Strategic Partnerships

Eg Biotech, overseas longevity businesses and hospitality partners that are interested to treat their patients at MHG

With its flagship hospital in Bangkok and two anti-aging clinics at the Sukhothai Hotel and in Samui, MHG has established a platform to provide anti-aging and cancer treatments to patients sourced via agents, strategic partnerships and directly from own channels

## Direct

Eg MHG website, customer referrals, medical tourism



# Case Studies and Testimonials

## Vitidnan Rojapanich



- Thailand's first climber to reach the summit of Mount Everest.
- Miskawaan Global Brand Ambassador and customer since 2022
- Co-Curator of Project Summit, a personalized health journey to climb Mount Everest.

## Jay "Messi" Chanathip



- Thailand's most famous professional national football player
- Loyal customer of Miskawaan since 2020
- Receives personal rehabilitation and injury recovery and prevention protocols

## Nergui Tserendorj



"I'm so glad I made this decision because of Miskawaan. They did a thorough diagnosis in my body. I didn't know I had so much inflammation in my body. I used to lie down after six or five hours. Now, with Miskawaan Immune Booster and rehabilitation treatment, I'm actually running all day. I feel great. I feel energetic, and mentally, I'm so strong. I'm super happy that I have chosen Miskawaan. It's excellent!"

## Andrew Richardson



"My journey has been about getting all the people together, and I was lucky enough to be able to do it.

What Miskawaan has done is brought all these people together in one place and I would thoroughly recommend anybody who has any disease at all, especially cancer, to see the doctors at Miskawaan."

## Xander Parish OBE



- First British ballet dancer to be employed by the Mariinsky Ballet in St Petersburg
- Diagnosed with severe inflammation and joint issues. Immediately prescribed a course of infusions, followed by supplements tailored to Xander's needs
- A significant improvement in the body mechanics after only 6 months into the journey with MHG
- Xander reported that his joints felt stronger & healthier than before and that this improvement was having a positive effect on his training, which in turn helped enhance his performance

# World Class Lab Partners



Munich, a broad spectrum of other tests, treatment intelligence



Munich, EMA approved testing facility for cancer



Greece, EMA approved testing facility offering chemo-sensitivity tests



Austrian Society for Sports Dentistry (ÖGSZM)



Thailand, strategic local partner near MIH property.



Hamburg, world class exclusive lab partner. Cancer specialist test.



A large billboard stands on a highway under a clear blue sky. The billboard features a large, faint, stylized medical symbol (a circle with a cross inside) in the background. The text on the billboard is centered and reads: "A NEW KIND OF HOSPITAL IS COMING SOON". The billboard is supported by a dark metal structure with a single thick pillar. In the background, there are other billboards, including one for "PRIME TIME LIVE" and another for "THE WALKER", and some city buildings. A few cars are visible on the highway.

"A NEW KIND OF  
**HOSPITAL**  
IS COMING SOON"

# Introducing Miskawaan International Hospital

- Specializing in ageing and cancer, and dedicated to healthcare excellence, our practitioners prioritize evidence-based treatments that are guided by a global medical advisory board, which is invested in forward-thinking scientific research
- Our flagship facility is a boutique hospital that focuses on an integrative approach to treating cancer and other chronic inflammatory disorders (CIDs) like heart diseases, rheumatoid arthritis, multiple sclerosis, diabetes and inflammatory bowel diseases
- The market opportunity for our hospital concept is significant, given the current landscape of healthcare providers in Thailand. With approximately 370 private hospitals in the country, all focusing on the old model of conventional treatment, there is a clear gap in the market
- While existing hospitals offer a full range of conventional treatments like surgery, medication and standard rehabilitation services, none of them provide alternative diagnostics and treatment methods. Furthermore, there is a lack of after care facilities.
- Our hospital concept seeks to revolutionize cancer and chronic diseases care in Asia by providing a holistic approach that considers the individual needs of each patient. By filling the gaps in the market and embracing innovation, we aim to improve the outcomes and quality of life for patients living with chronic inflammatory conditions and cancer survivors.



## Why is Miskawaan developing MIH?



### Growth from Clinical operation to an International Hospital

- Hospital license enables a comprehensive breadth of treatment options, targeting a larger patient pool
- Added credibility and trusted brand credentials for Cancer and Chronic illness patients
- Precedent for future expansion in both Thailand and overseas

# WHY WE ARE FOCUSING ON CANCER

Cancer treatment presents unique challenges due to the diverse range of cancer types and individual variations among patients, necessitating a tailored and personalized approach to achieve positive outcomes

## THE ISSUES WITH PURELY CONVENTIONAL ONCOLOGY:

- Radiation, surgery, and chemotherapy as treatment options
- Limited emphasis on causes/risk factors in favor of treatment
- Overlooking the role of the immune system
- Possible reduction in quality of life due to side effects
- Neglecting the impact of lifestyle factors
- Insufficient preparation or after-care in treatment

The Miskawaan approach to cancer is to combine conventional oncology with effective functional medicine to deliver optimal patient outcomes

## THE MISKAWAAN WAY



### PREVENTION

Empowering individuals through lifestyle modifications and bolstering immune system and gut health.



### DIAGNOSIS

Timely detection and intervention using the latest diagnostic technology. We aim to provide patients with information on all available treatment options, including both conventional and alternative methods, all under one roof.



### RESTORATION

Focusing on immune system restoration and aftercare of chronic diseases and side-effects from chemotherapy and radiation therapies.

Promising recovery opportunities at MHG's premium villas in Koh Samui, fostering a supportive environment for potential Recuperation & Retreat.



Situated in the heart of Bangkok, MIH will be Asia's first Integrative Functional Healthcare Hospital

Over 4,000 square meters of private building with dedicated frontage road access to private parking

MIH

MISKAWAAN  
INTERNATIONAL HOSPITAL

Phetchburi Road



Thonglor, Soi 55

Ekamai, Soi 63

Sukhumvit Road



# Patient Centric Service Journey Model

- World renowned IT solutions for seamless patient touchpoints
- A concierge-style approach with ambassadors guiding patients through their hospital journey and medical coordinators to support the clinical journey of the patients
- Personalized app to facilitate seamless communication, appointment management, and information access
- Multi-facted spaces designed for personal or family-style functions
- 29 private treatment rooms, 10 infusion pods and VIP rooms
- Private chemotherapy area
- Medicine delivery robot





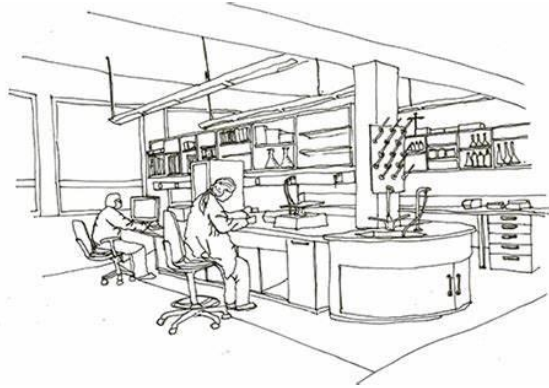


PROPRIETARY & CONFIDENTIAL © 2024 Miskawaan Health Group. All rights reserved.

## Artfully and Sustainably Designed Spaces

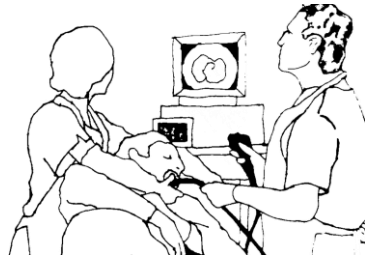
- Minimalist Modern and Sustainable Design was incorporated to create an elevated ambience.
- Use of natural locally sourced materials, sustainably resourced.
- Use of Thai local artist, paintings and sculptures to promote Thai-ness.





Laboratory &  
Compounding  
Pharmacy

Specialized  
Treatment Rooms



Portable Treatment & Imaging  
Equipment



## Specialized Laboratory, Equipment and Treatment Rooms

- Clean room laboratory 140 Sq.m.
- In discussions with strategic partners for joint Lab collaboration
- 4 specialist rooms (gastrointestinal treatments, oxygen chamber)
- Exploring possibility to conduct clinical trials
- Specialized compounding pharmacy for precision and proprietary MHG supplements



## Miskawaan Rehabilitation Centre



## Restaurant, Kitchen, Workshop Spaces



## Herb Garden, Open Spaces

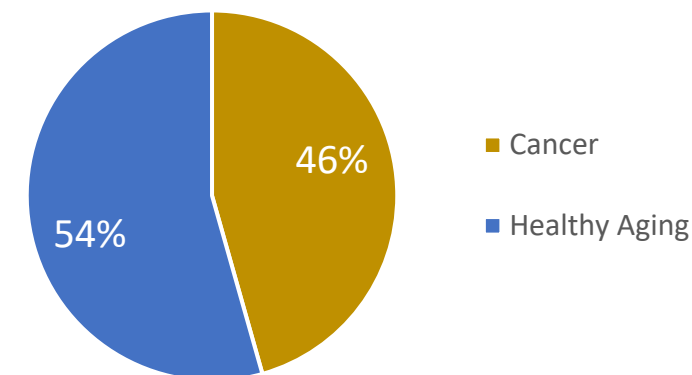


- Customized Rehabilitation Gym with five physiotherapy rooms
  - Membership Programs, Classes & Workshops, Personalized Coaches
  - Cancer coach rooms
- 
- Professionally-run Kitchen curated with nutritionists, doctors and personal coaches
  - Open-Pantry style Kitchens for educational workshops and group events
  - 30 seat academy classroom for training events
- 
- Herbal garden featuring outdoor trees
  - Natural light and water therapy spaces
  - Psychological counselling areas and rooms

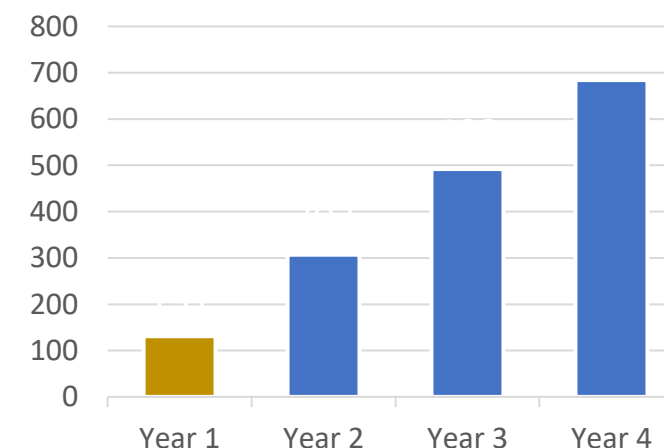
# MIH Financial Summary

- THB180m construction budget, of which nearly half has been spent to date and on budget; THB227m overall budget including equipment, IT etc
- Initial target capacity to treat 117 patients per day based on number of treatment rooms, ambulatory business model and number of doctors
- MIH is projecting >10,000 patient visits in 2025 after launch in May 2025 (48 patients per day on average and average billing of ~THB11k)
- Cancer revenues will increasingly contribute to total revenues reaching almost half of total revenues by Year 4
- Capacity utilization will start at 41% of target number of patients in Year 1 increasing to 90% of target by Year 4
- MIH is projecting revenue of THB131m in Year 1, growing to THB684bn by Year 4 and a gross profit margin of ~50%
- Consolidated EBITDA including MIH and the clinics in Samui and Sukhothai should be breakeven by Year 2 with margin reaching ~30% by Year 4

Year 4 MIH Revenues



Year 1-4 MIH Revenues (THBm)





# MHG Financial Projections

THBm	2024	2025	2026	2027	2028
Revenue	46	192	394	580	772
<i>Growth</i>		314%	105%	47%	33%
- MIH	21	131	307	492	684
- Samui	20	31	44	44	44
- Sukhothai	5	31	44	44	44
Gross Profit	(6)	64	164	278	395
<i>GP Margin</i>	(12%)	33%	42%	48%	51%
EBITDA	(79)	(38)	43	135	226
<i>EBITDA Margin</i>		(20)%	11%	23%	29%

Initiatives excluded from projections:

- Upside from Jiuzhang Bio partnership (registering CHA products in Thailand and performing clinical trials)
- Additional Miskawaan clinics located at premium 3<sup>rd</sup> party hospitality locations
- In house R&D lab producing new products such as Secretome or EBV vaccine

# MHG's first major 3<sup>rd</sup> party fundraising to scale up via MIH

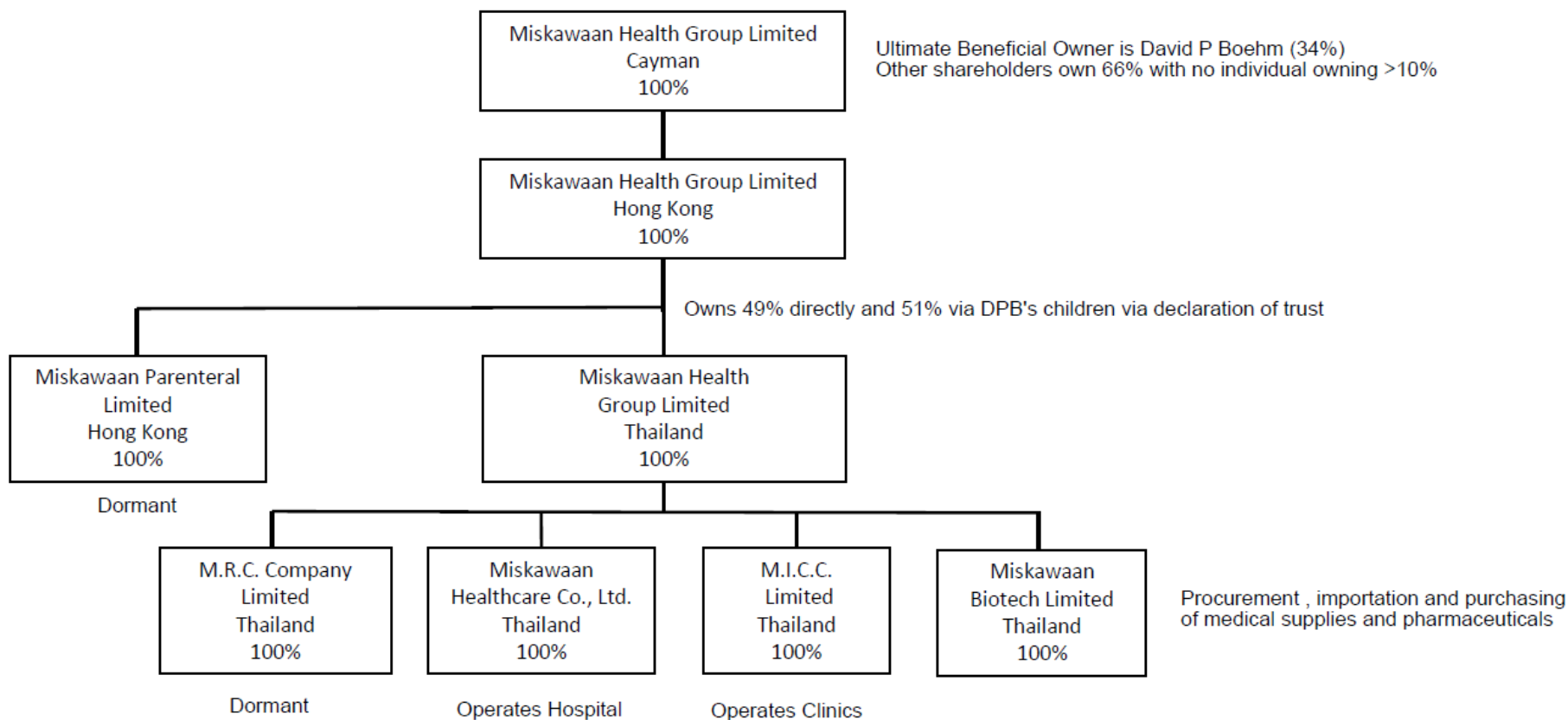
- David P Boehm has funded most of the development of MHG since its establishment in 2018
- MHG is now raising US\$10m with an upsize option up to US\$25m
  - US\$10m for completing MIH and launching new products including CHA and Secretome
  - up to a further US\$15m for business development
- Miskawaan International Hospital:
  - ~US\$7m for:
    - Construction, refitting and equipment
    - Lease
    - Medical staff
    - IT and MIS upgrade
  - ~US\$3m for:
    - Working capital
    - Launching CHA and Secretome in Thailand
- Other projects / business development:
  - Additional anti ageing clinic partnerships with hospitality partners
  - Development of anti-ageing therapies such as B-OT/EBV/Klotho
  - Lab partnerships to produce cutting edge therapies at MIH
  - Potential purchase of land at MIH owned by lessor
  - Clinic/laboratory partnership with MFU in Chiang Mai

## Exit strategy

- MHG is well positioned to become a leading player in Asia's healthcare industry and the leading platform in integrated functional healthcare for cancer treatment – with CHA as a catalyst that will only be available outside China via MHG
- There are plentiful growth opportunities for MHG in Thailand – including more hotel-based and specialist longevity clinics
- In addition to Thailand, MHG may pursue opportunistic international growth opportunities like opening medical facilities in Southeast Asia and the Middle East
- MHG plans to spend the next 3-5 years focused on executing its strategy for MIH and anti ageing clinics and creating value for its shareholders
- MHG will pursue a progressive dividend policy when the business generates significant cash flows
- After successfully growing the business, MHG will consider exit options such as an IPO in HK or Thailand or trade sale / merger in order to realise value for its shareholders



# MHG Corporate Structure



- Parent company is incorporated in the Cayman Island with an intermediate holding company and head office in Hong Kong
- Thai operating companies are held by MHG Thailand
- MHG Thailand has no meaningful bank debt but there are shareholder loans from MHG HK to MHG Thailand
- MHG is flexible to explore different investment structures depending on the investor's preference and objectives





Follow us on social media



@miskawaanhealth